

*The future begins  
with the vision we create today...*



Neighborhood House of Milwaukee  
**2012 Annual Report**

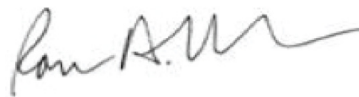


*Throughout all the years,  
one constant has sustained us...*

Since our founding in 1945, the mission of Neighborhood House of Milwaukee has been to build a strong community by **strengthening individuals, families, and the neighborhood**. While our mission has remained constant, the challenges of our community are forever shifting. In the early years, we focused on meeting the recreational needs of young people and children in order to "... set them on the road towards responsibility and constructive citizenship." Soon thereafter, we broadened services to include educational programming, outdoor environmental education, literacy services, and more.

As our history shows, we are continuously called upon to think creatively, design new programs, and find additional resources to help the children and families we serve build a better a future for themselves and our community. This year was no exception. We launched the Personal Responsibility Education Program (PREP), introduced the Active Early 2.0 project in our early childhood classrooms, expanded S.T.E.A.M. curriculum in the

University Kids Club program, and addressed budget pressures at the International Learning Center by restructuring class offerings. Throughout all the years, throughout all the changes one constant has sustained us: YOU. Your time, your energy, and your financial support empower children and families to move beyond the barriers of poverty, gain self-sufficiency and realize their full potential. You build the future today. Thank you for your support.



Roman A. Draba  
Board President



Richard C. Cox  
Executive Director





# *Building Strong Foundations*

## **EARLY CHILDHOOD SERVICES (ECS)**

Serving more than 120 children annually, Neighborhood House's fully licensed child-care center and early childhood educational programming has been recognized throughout the community for its outstanding ability to create a positive educational environment that challenges young minds, increases self-esteem and encourages personal responsibility.

Programming is play-based and focused on school readiness with developmentally appropriate lessons covering core subject areas such as math, science and reading. The recent introduction of the evidence-based Second Step Social/Emotional curriculum further enhances school readiness by building self-esteem, combating bullying and teaching children how to positively interact with others.

Neighborhood House is also proud to have been chosen as one of only two sites to participate in the Active Early 2.0 project of the national campaign to prevent childhood obesity. The Active Early 2.0 project encourages the development of life-long healthy living habits in children ages 2-5.



# Building Hopeful Futures

## PROGRAMS FOR SCHOOL AGE YOUTH

**University Kids Club (UKC)** is a high-quality before- and after-school program for children ages 7-12. UKC provides school age children and youth with a variety of academic enrichment and recreational opportunities designed to improve academic achievement, promote healthy lifestyles, and strengthen life skills. Building on Neighborhood House's longstanding focus on outdoor environmental education, an expanded focus on science, technology, engineering, arts, and math (S.T.E.A.M) curriculum was initiated. In one project, UKC kids spent the spring learning the core physics of movement, designing rockets using found materials (2 liter bottles, old plastic eggs, etc) and then headed out to the nature center for the inaugural rocket launch. The launch did not go off without a hitch: one ended nose down in a grassy field.

**Community Learning Center (CLC)** at Albert Story School in Milwaukee's urban core is a partnership with Milwaukee Public Schools. The CLC serves about 290 K4-8th grade students with many participants coming from refugee families served by the NH International Learning Center. The CLC offers a mix of academic enrichment and recreational opportunities similar to those offered by

UKC. During the summer, CLC programming was moved from Albert Story School allowing further integration of the CLC into core NH programming. CLC children and youth participated in the PREP program, outdoor environmental education programming at the NH Nature Center, and weekly field trips.

**Summer Day Camp** provides school-age youth daily enrichment activities for ten, fun-filled weeks each summer. Participants benefit from a wide array of activities focused on academic enrichment, Outdoor/Environmental education, sports/recreation, and character building/community service. In 2011, many activities centered around a Magnificent Mammals theme. Through study and observation, program participants learned to identify midwestern mammals, understand their role in the ecosystem, and how we inter-relate with each other. Building on their observations made at the NH Nature Center, campers headed to Chicago's Brookfield Zoo for a day exploring their prairie animal habitat. In addition, over the summer each youth transformed a fallen branch into a totem featuring animals that personified themselves and their family.



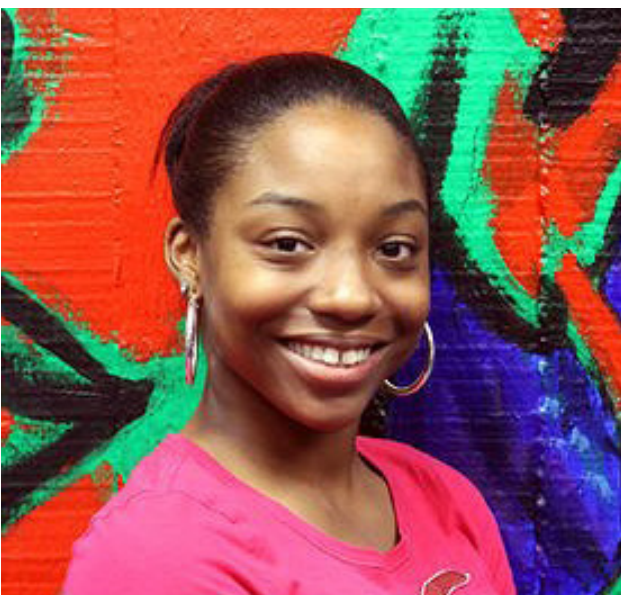


# Fostering Healthy Relationships

## Personal Responsibility Education Program (PREP)

Operating under the youth friendly motto: *Money! Power! Respect!* the Personal Responsibility Education Program (PREP) focuses on financial fitness, making proud and responsible choices, and healthy relationships as tools to prevent teen pregnancy and sexually transmitted diseases, including HIV/AIDS.

In its inaugural year, PREP developed and sustained strong partnerships with Milwaukee Public Schools and community organizations like the AIDS Resource Center of Wisconsin. The program hit the ground running with more than 270 youth, ages 10-19 participating in classroom based curriculum, summertime experiential learning activities, and the first Got Money! Conference.



## Building Character

### TEENS ON THE MOVE

The Teens on the Move program focuses on empowering teens to make healthy choices, avoid or reduce drug and alcohol use, engage in education, develop leadership skills, and make positive contributions to the community.

With over 160 active participants between the ages of 13 and 19, the Teens on the Move program is continually evolving to capture the interest of participants and remain relevant. Our youth leadership council works in cooperation with staff to continually update and implement fun and educational programs.

This year, in cooperation with the Hmong American Family Association, the teens wrote and performed a play about the consequences of alcohol abuse for a teen dancer. Safe Skate Nights, which communicate positive messages in a party atmosphere, were introduced with much success. Young entrepreneurs were mentored by business owners through a partnership with the Metropolitan Association of Commerce, and the youth completed community service projects with both SHARE Milwaukee and the Milwaukee Rescue Mission.

# *Rebuilding Lives in a New Land*

## **INTERNATIONAL LEARNING CENTER (ILC)**

Neighborhood House's International Learning Center (ILC) directly serves over 600 refugees a year and benefits hundreds more family members. They come from over 25 different countries, many from war-torn or famine-ravaged Somalia, Burma, the Congo, and Liberia. The ILC continues to serve generations of Hmong, Vietnamese, and Lao refugees displaced after the Vietnam War.

The majority of students served have little or no prior education in English or their own tongue. The ILC's English as a Second Language program focuses on life skills and emerging literacy skills for parenting, working, and becoming a citizen.

The ILC also has an award-winning licensed on-site pre-school. Home visits by preschool staff provide immigrants with crucial parenting support. Referrals for trauma counseling, medical needs, and job and school support are also offered.

The ILC's Citizenship Program, one of only 3 area citizenship programs to have Site Recognition and Accreditation by the U.S. Board of Immigration Appeals, continues to expand with 42 students passing the citizenship exam this year. A newly developed citizenship class for older adults will begin operations at Washington Park Senior Center in early 2013.





# *Building a Broader Vision by Connecting with the Natural World*

## OUTDOOR AND ENVIRONMENTAL EDUCATION PROGRAM (OEE)

Central to the NH mission, Outdoor Environmental Education (OEE) is infused throughout all NH youth and family programs. Extraordinary facilities that include an in-house science lab, an award-winning urban garden & play habitat, and 93-acre nature center located in Dodge County offer a wide array of opportunities to explore and learn.

For more than 40 years, the annual spring maple sugaring program has been a favorite of young and old. This year was a challenging maple sugaring year. Despite the best efforts of 650 community members the maple grove yielded only 500 gallons of sap that boiled down to only 10 gallons of syrup! The low volume was a disappointment for our entrepreneurial teens who traditionally sell the syrup at NH events.

However, the teens stayed active building a new Team Challenge course at the nature center which is designed to promote cooperation, communication, and team work as participants conquer the many physically and mentally challenging activities. A fun-filled, character building activity for years to come!

The Chequamegon-Nicolet National Forest was the playground for several NH youth who participated in the **Urban Connections Conservation program** throughout the summer. Unforgettable experiences include: swimming in a lake for the first time, making campfires, and hearing wolves howl! Teen Program Supervisor James Austin summed it up this way: "This is an experience that will go with them the rest of their lives. They're going to tell their children about this and they're going to push their children to go out to nature and go out to camp. That's one of the things that every child in the urban environment should take part in."

The beloved NH Nature Center, the site of many memorable learning experiences, continues to battle with garlic mustard, wild parsnip, and other invasive species. In partnership with the Bureau of Land Management, we are eradicating these invaders through our multi-phase Prairie Restoration Project.



# *Building a Healthier Community*

## **Community Health Improvement for Milwaukee's Children (CHIMC)**

Neighborhood House is first and foremost a safe haven and healthy environment for urban children and families to thrive. That is why NH programs have been on the front line in addressing lifestyle and health care issues since the very beginning. Our Community Health Improvement for Milwaukee's Children (CHIMC) community-based health project aimed at reducing health disparities and eliminating vaccine-preventable childhood diseases in Milwaukee neighborhoods is one such effort. Funded by the National Institutes of Health-National Institute for Minority Health and Health Disparities, the CHIMC project is a collaboration between local residents, academic partners, and community organizations to increase immunization rates in the communities surrounding Neighborhood House.

Since its inception in 2005, CHIMC has worked with the families of more than 1,500 Milwaukee Children. As a result of the CHIMC program, parents surveyed show a 10% increase in both attitude toward and active involvement in their children's immunizations. Also, parents reporting awareness of accessible healthcare options increased 26%.

### **2012 CHIMC highlights include:**

- Hosted our 4th annual Community Health Fair with community partners to provide information and health services to the general public
- Worked with 64 parents with children less than 4 years old to increase their completion rate for the full schedule of recommended immunizations
- Surveyed 200 parents who participated in CHIMC and found a significant increase in positive attitudes and opinions about immunizations
- Established a partnership with the United Neighborhood Centers of Milwaukee (UNCOM) to communicate CHIMC findings throughout metropolitan Milwaukee





# Board of Directors

FISCAL YEAR 2011-2012

**Richard C. Cox**, Executive Director

**Therese Armbruster**  
Elements East

**Rick Bliss**  
Godfrey & Kahn

**Joel Brennan**, Vice President  
Discovery World at Pier Wisconsin

**Mark A. Cameli**  
Reinhart Boerner Van Deuren S.C.

**Roman Draba**, President  
We Energies

**Andy Hall**, Treasurer  
Automotive Holding Corp.

**Joann Henry**  
We Energies

**David Jorgensen**  
VJS Construction Services

**Mark Katz**  
Johnson Controls, Inc.

**Andrea Khan**  
Community Volunteer

**Kathryn A. Kuhn**  
Medical College of Wisconsin

**Janet Trostel Martin**  
Community Volunteer

**Leslie Posey**  
Community Volunteer

**Donna Recht**  
Cardinal Stritch University

**Will Ruch**  
Versant

**Judy D. Shane**  
Community Volunteer,  
Special Education Mediator

**Susan Stoebe-Jackson**  
U.S. Bank Private Client Group

**Don Wallace**  
Community Volunteer

**Melody Wolske**,  
PricewaterhouseCoopers LLP

**Terry R. Young**, Secretary  
The Northwestern Mutual Life  
Insurance Company

# Financials

2012 Fiscal Year 7/1/11 - 6/30/12

## Fiscal Year 2012 Statement of Activities

### REVENUE

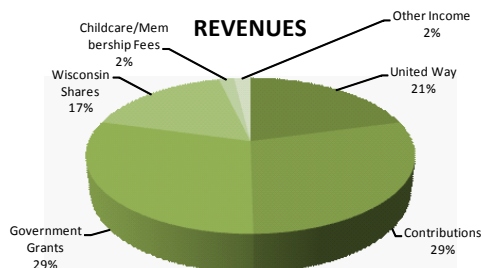
United Way	473,112
Contributions	659,761
Government Grants	671,031
Wisconsin Shares	387,495
Childcare/Membership Fees	40,837
Other Income	44,005

**Total Revenue** **2,276,241**

### EXPENSES

Program Services:	
Early Childhood Service	714,118
Family & Youth Programs	738,484
ILC	451,126
Outdoor Environmental	1,613
Community Programs	362,917
Supporting Activities:	
Administration	67,233
Fund Development	139,825

**Total Expenses** **2,475,316**



## Balance Sheet as of June 30, 2011

### ASSETS

Current Assets	263,766
Net Fixed Assets	1,507,623
Other Assets	839,002

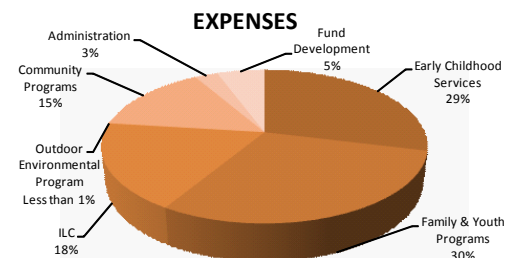
**Total Assets** **2,610,391**

### LIABILITIES & NET ASSETS

Current Liabilities	350,711
Long-term Liabilities	8,763
Total Liabilities	359,474
Total Net Assets	2,250,917

**Total Liabilities & Net Assets** **2,610,391**

**Change in Net Assets** **199,075**



See our annual reports online at  
[www.nh-milw.org/about/annual-report](http://www.nh-milw.org/about/annual-report)

## NEIGHBORHOOD HOUSE FACILITIES

### NEIGHBORHOOD HOUSE (Main)

2819 West Richardson Place  
Milwaukee, WI 53208  
Phone: 414.933.6161  
Email: [rcox@nh-milw.org](mailto:rcox@nh-milw.org)

### INTERNATIONAL LEARNING CENTER

639 North 25th Street  
Milwaukee, WI 53233  
Phone: 414.344.4777  
Email: [ilc@nh-milw.org](mailto:ilc@nh-milw.org)

### COMMUNITY LEARNING CENTER

Albert Story Elementary School  
3815 West Kilbourn Avenue  
Milwaukee, WI 53208  
Phone: 414.934.4800  
Email: [aharris@nh-milw.org](mailto:aharris@nh-milw.org)

### NATURE CENTER & LODGE

Dodge County, Wisconsin  
Phone: 414.933.6161 ext. 136  
Email: [nespy@nh-milw.org](mailto:nespy@nh-milw.org)

# Donors

## FISCAL YEAR 2012 (JULY 1, 2011- JUNE 30, 2012)

### Legacy

#### \$50,000 or more

Alexis de Tocqueville Society  
United Way of Greater Milwaukee  
Mihi Cura Futuri Fund - Waukesha County Community Foundation

### Visionary

#### \$25,000-\$49,000

Faye McBeath Foundation  
Melitta Pick Charitable Trust  
Northwestern Mutual Foundation  
United Way of Greater Milwaukee – Direct Giving

### Dream Builder

#### \$10,000-\$24,999

Brewers Community Foundation Inc.  
Emory T. Clark Family Charitable Foundation  
Thomas & Meghan Findley  
The Hamilton Family Foundation  
Helen Bader Foundation  
Jane Bradley Pettit Foundation  
Jack McKeithan  
R.A. Stevens Family Foundation  
Richard & Ethel Herzfeld Foundation  
Julie & David Uihlein  
Wisconsin Energy Foundation

### Champion

#### \$5,000-\$9,999

Rick & Wendy Bliss  
Bostik, Inc.  
Camille A. Lonstorf Trust  
Catherine & Walter Lindsay Foundation Fund  
Roman & Carol Draba  
Greater Milwaukee Foundation  
Mark & Amy Katz  
Ladish Company Foundation  
David & Madeleine Lubar  
Milwaukee Urban League  
Quarles and Brady  
Ralph Evinrude Foundation  
Reinhart Boerner Van Deuren s.c.  
We Energies  
Weiss Family Foundation

### Trailblazer

#### \$1,000-\$4,999

A.O. Smith Foundation  
American Enterprises International, Inc.  
Alfred & Isabel Bader  
Bert and Patricia Steigleder Charitable Trust  
Joel & Audra Brennan  
Craig & Nancy Byers  
Cabaniss Law Office

Mark & Sharon Cameli  
CH2M Hill Foundation  
Clare M. Peters Charitable Trust  
Coleman and William Ltd.  
Richard & Terry Cox  
Dewan Dental Wellness  
Sandy & George Dionisopoulos  
Direct Supply  
Kathy Kuhn & John Dirkse  
Dyar Foundation  
Evan & Marion Helfaer Foundation  
Godfrey & Kahn  
Charles & Jean Gorham  
Martin Gutmann  
Hall VW/Mazda  
Joann Henry  
Judith Hirsch  
Peter & Sue Hitler  
Hupy and Abraham, S.C.  
Johnson Controls Foundation  
Gary & Judy Jorgensen  
Just Give  
Chad J. Koch  
Krause Family Foundation  
Nancy Linzmeyer  
Marcus Hotels & Resorts  
Jan & Vince Martin  
Erica J. Marvak  
Michael & Patty McCauley  
Hazelyn McComas  
Robert Smith & Sarah McEneaney  
Medical College of Wisconsin  
Mortgage Guaranty Insurance Corp.  
Mosher Family Foundation/Northern Trust  
Natural Resources Foundation of Wisconsin  
Donna Recht & Robert Newby  
North Shore Bank  
Northshore Congregational Church  
David Baumann & Kathleen Olejnik  
Park Bank  
Pheasants Forever Inc.  
Phyllis & Walter Malzahn Charitable Trust  
Pollybill Foundation  
Posner Foundation, Inc., Gene & Ruth  
PricewaterhouseCoopers LLP  
Rexnord Foundation  
RitzHolman CPAs  
Don Wallace & Mary Pat Rose  
Carol Schimmelpfennig  
Roger & Judy Smith  
Stan Stojkovic  
The Foundation of Wisconsin Automobile & Truck Dealers  
The Marjorie Christiansen Foundation  
The Stratton Foundation  
Trust Point Inc.  
Mr. & Mrs. Joseph Tyson, Jr.  
U.S. Bank Private Client Group



United Neighborhood Centers of Milwaukee  
University of Wisconsin-Milwaukee  
Versant  
VJS Construction Services  
Westbury Bank  
WISN-TV  
Melody & Richard Wolske  
Terry R. Young

### **Pacesetter**

#### **\$250-\$999**

Richard & Joan Abdo  
Albert J. & Flora H. Ellinger Foundation  
Richard Rose & Amanda Aldridge  
All Saints' Cathedral  
James & Deborah Andritsch  
Peter & Therese Armbruster  
Mr. Donocan D. Austin  
Automatic Entrances of Wisconsin, Inc.  
Ayco Charitable Foundation  
Donald & Donna Baumgartner  
Gregory & Louise Berg  
Ervin & Beverly Colton  
Community Health Charities  
Dan & Paige Conley  
Francis & Mildred David  
Ross H. Dean  
Emily Dinardo  
Joan Donner  
Dudley J. Godfrey, Jr. 2001 Trust  
Ron & Dona Finco  
Dean Fitzgerald  
Rochelle Flagg  
David & Tiffany Frazer  
Aaron Godfrey  
Andy & Gretchen Hall  
Dale Harmeyer  
Hentzen Coatings  
John Horgan  
Linda Horn  
Imagine Nation Books LTD.  
In Memory of Jewel Davis  
Int. Brotherhood of Elec. Workers, Local 494  
Jack & Martha Prince Family Fund  
Jean & Robert Prosser Family Fund

David & Mary Jorgensen  
Ralph & Gretchen Kane  
G. Frederick & Sue Kasten  
Rebecca Kennedy  
Fred & Joan Kessler  
Andrea Khan  
Bob & Pam Klein  
Arthur & Nancy Laskin  
Eugene & Gwendolyn Lavin  
Teresa Lex  
Bruce Lynranta  
Bob Blakely & Laurie Maduscha  
Michael Maierle  
Janet & Andrew Martin  
Jane Ann Matheus  
Charles & Brunetta Matthews  
Douglas & Annette Mickelson  
Milwaukee Jewish Federation, Inc.  
Monroe Family Rev. Trust  
Larry & Judy Moon  
Christie & Steven Murphy  
Forozan Nasery  
David & Karen Nelson  
New Berlin Dental Group  
North Shore Bank  
Northwestern Mutual  
Christopher & Anne Noyes  
Paddock Fund  
Mary Ellen & Bruce Pandycyk  
Paul & Philia Hayes Fund  
Elizabeth Perkins  
Potawatomi Business Development Corp  
Nathan & Virginia Riesing  
Riverwalk Dentistry, SC  
Robert C. Archer Designated Fund  
David & Dorlee Rohlfing  
Will & Marilyn Ruch  
Mary Kay Schuknecht  
Bruce and Janine Smith  
St. Agnes Congregation  
St. Thomas of Canterbury Episcopal Church  
St. William Catholic Church  
St. Therese Congregation  
Susan Stoebe  
Ron Tays



United Way of Metropolitan Chicago  
U.S. Bancorp Foundation  
Robert & Becky Valcq  
James & Kay Vaughan  
Sherrie Williams  
Brian & Laurie Winters  
Wisconsin Literacy, Inc.  
Wisconsin Sertoma Fund Inc.  
Jane Wittig  
Christopher Wittman  
Ralph & Marlene Zick

### **Guardian**

#### **\$100-\$249**

Eddie-Sahagian Allsopp  
Tom Armstrong  
F. Michael Arnow  
Spring Burgess Ashley  
AT&T United Way Employee Giving Campaign  
Steve Atwell  
Mark Baden  
Edward Bailey  
Aisha Barkon  
Margi Bartaczewicz  
Michael & Melanie Bennett  
Shannon Berkman  
Eric Tranmal & Anna Bierer  
Jack Bode  
Amy E. Booher  
Elizabeth Bradley  
Brennan Law Offices LLC  
Brookfield Badger Insurance  
Shante Brown  
Song Xiong & Joe Buck  
Deb Burmeister  
Karen Cannistra  
William Drew & Mary Cannon  
CEC Entertainment  
Richard Chudnow  
Combined Federal Campaign  
William Croke  
Stewart Edwards & Joanne Danforth  
Walter & Diane Daumler  
Gina De Rosso  
Michael & Stephanie Delmore  
Nan Doucette

Bista Dowd  
Christine Durski  
Don Ellingsen  
Fidelity Charitable Gift Fund  
Friends of Mackenzie  
Carl & Karen Gosewehr  
Peter Tropman & Virginia Graves  
Claire Greene  
Sarah Hack  
Daniel & Suzanne Haislmaier  
Gretchen Hall  
Harley-Davidson Motor Company  
Denis Harmon  
Michael & Lisa Hatch  
Kathryn Hein  
Barbara Henry  
Tim & Jonna Higgins  
Fred Hoepfl  
John & Susan Honkamp  
Allen Leverett & Laura Hosbein  
John & Kathy Housiaux  
Howard International Ltd.  
Timothy Duax & Kathy Hubing  
Jacaeugn Hus  
Jay Kay Foundation  
Barbara J. Joers  
Robert & Kate Jones  
Maureen Kania  
Karen J. Glanert Charitable Trust  
Mr. & Mrs. Patrick Keily  
Willie Peterson & Peggy Kendrigan  
Asim Khan  
Kohler & Hart  
David & Joan Kuehl  
Richard & Catherine Labinski  
Kris & Wayne Lueders  
Thomas St. John & Micaela Levine  
Lisa Long  
Bethany Lyles  
Mary & Charles Kamps Fund  
McAdams Holding LLC  
Margaret McCarthy  
Daniel McCarthy  
Rita McDonald  
Lisa Malmarowski & Pam Mehnert  
Michael & Diana Morgan  
Jennifer R. Morrison





Ken Myszka  
 Christopher & Anne Noyes  
 Janet & David Olsen  
 Marshall Pepper  
 James Phillips  
 David & Marijayne Poch  
 Robert & Sally Probst  
 Stephen & Susan Ragatz  
 Anthony Reese  
 Drake & Evelyn Reid  
 Rose Reitz  
 Christine Reynolds  
 Edward Richardson  
 Theresa Richie  
 David & Grace Rogers  
 Traley Rogers  
 John Rothstein  
 Dave & Judy Scharfenberger  
 Robert Schlytter  
 Schnoll Insurance Services  
 Schwab Charitable Fund  
 Ellen Servais  
 William Shaw  
 Shepherd of the Valley Lutheran Church  
 Heather and Steven Smart  
 Katherine Smith  
 Leonard Sobczak  
 Jack & Germaine Spooner  
 Sheryl & Scott Stein  
 Faiza Strain  
 Sandra Stuermer  
 Patrick Sullivan  
 Luanne Thompson  
 Keri Thompson  
 George & Charlene Tranmal  
 Erin Turtenwald  
 Michael & Charlene Uhing  
 United Way in Waukesha County  
 George & Elizabeth Walcott  
 Fred & Louise Waldendowski  
 Michelle Waters  
 WaterStone Bank  
 Hope Liu & Charles Wauters  
 Wauwatosa Savings and Loan Foundation  
 Lindsay & Teig Whaleysmith  
 Earnestine Willis  
 Patricia Wilmeth

Elisabeth Wright  
 Scott Gelzer & Patricia Wyzbinski  
 John Zweifel

### Friend \$1-\$99

WM. & Ruth Stueckruth  
 Robert & Mary Ellen Acker  
 TJ Anderson  
 Jim & Marianne Andritsch  
 Ms. Alexandria Antonchorgy  
 Jeanne Armstrong  
 Avenues West Association  
 Rosemary Lotzer & Patricia Backus  
 Aisha Barkow  
 Peggy (Margaret) Baumann  
 Julie Behling  
 Jane Benesh  
 Richard & Judy Bottoni  
 Rod & Joy Botts  
 Patrick & Kathryn Brady  
 Kent Lowry & Catherine Breitenbucher  
 Mary Brennen  
 Mary Brenner  
 John Brooks  
 Thomas & Suzanne Brophy  
 Donald & Betty Brown  
 Ardene Brown  
 Weil & Cheryl Brunner  
 Chicago Regional Council of Carpenters  
 J. Thomas & Judith Christofferson  
 Paula Cody  
 Clifton Crump  
 Dianne Dagelen  
 Tonya L. Dailey  
 Rev. Jane Daniels  
 Amelia Davis  
 Jacqueline Davis  
 James & Kathy Davis  
 Regina Dombeck  
 Michael Dowd  
 Gary Drescher  
 Thomas Dyer  
 Nancy Eggert  
 Rodney & Helen Eglash  
 Nell Eicher  
 Julie & Theodore Erickson  
 Jean Ericson



John & Sara Esser  
Eric & Kerry Friedrichsohn  
John Dombeck & Cathy Friel-Dombeck  
Debra Fulton  
Sheldon & Doran Gendelman  
Beth Glende  
Barbara Gurican  
Courtney Hammen  
Angela Harris  
Thomas Uhle & Grace Harrison Harrison Uhle  
Thomas & Mary Hawley  
Marilyn & William Hegge  
Barbara Heinz  
Yvonne Hentz  
Nelly Hernandez  
William & Michele Holcomb  
Margaret Hollman  
Michael Hubrich  
Charlotte Ithier  
Kenneth & Mary Lee Jacobs  
Christine & James Jensen  
Sharon Jordan  
Sue Joys  
Michael & Beverly Jurkowski  
Dr. Nathan & Nancy Kittelson  
Nathan & Nancy Kittleson  
Eugene & Grace Klann  
Karen Klinck  
Sally Kuzma  
Jerome Kyne  
Sybil Labudde  
Gary & Cathy LaLuzerne  
Nancy Latton  
Roger & Caroline Laubenheimer  
Megan Leary  
Stephanie Lehn  
Karen & Peter Leszcynski  
Peter Lee & Karen Levy  
Jamie Lex  
Anne Lindemann  
Robert & Donna Maccani  
James & Ann Maher  
Robert Bauman & Pam Malone  
Martinsek & Associates  
Cynthia Matchette  
Georgia Mavrinac

Diane May  
Paul & Heather McComas  
Allan McDonell  
Susan Metz  
Joan Mezmarich  
Michael Miller  
Drew & Joanna Moisant  
George Munkwitz  
Richard & Diane Omdahl  
Gerald Pagel  
Amanda Pirt  
Jeffrey & Laura Rauman  
Jack & Barbara Recht  
Lois Redic  
Patrick & Noreen Regan  
David Riedel  
John Remington  
Greg Remus  
William & Dorothy Rooney  
Damon Sanchez  
Donna Schmidt  
Paul Schneider  
Jamie Shorts  
Kathleen & Carl Sincere  
James & Lorene Sprenger  
St. Olaf WELCA  
Bruce Steinmetz  
Jack & Grace Stetter  
Studio Gear  
Summerfield United Methodist Church  
Arthur & Roberta Tacke  
Thomas J. Bliffert Foundation  
Nancy Tillman  
F. Patricia Dunn & Curtis Washington  
Jerri & Eman Washington  
Katherine Swank Watt  
Allen & Marcia Weidler  
Marian Weinberg  
Del & Kim Wilson  
Olivia Wong  
Reverend John H. and Romelle Worth  
Mike & Nancy Yttre  
Marilyn Zuehlke





# Public Sector Donors

Executive Office of the President

Safe & Sound – High Intensity Drug Trafficking Area

Environmental Protection Agency – Education Grant

US Department of Education

21st Century Community Learning Center

Wisconsin Technical College System – Adult Education and Family Literacy Grants

US Department of Health & Human Services

Blaco Grant for Prevention and Treatment of Substance Abuse

Minority Health & Health Disparities Research (CHIMC)

Personal Responsibility Education Program (PREP)

WI Department of Children and Families - Refugee and Entrant Assistance State Administered Programs

WI Department of Children and Families - Refugee and Entrant Assistance Discretionary Grant

US Department of Housing and Urban Development

Community Development Block Grant – City of Milwaukee

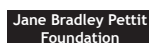
US Department of Justice Office of Juvenile Justice and Delinquency Prevention

Cal Ripkin, Sr. Foundation – Juvenile Mentoring Program

# In-kind Support

Thank you to the many individuals and businesses who contributed valuable goods and services to further the important work of our organization. Your donations made additional funds available to support the programs and services of Neighborhood House.

SPECIAL NOTE: Every effort was made to ensure that our donor lists are accurate. If your name was not included, we heartily apologize. Please contact the Development Department at 414.933.6161.



# Volunteers

Karina Albor  
Andrea Alston  
Nicole Anderson  
Lesley Augustine  
Ellen Aussem  
Katie Baehring  
Joni Baker  
Michael Bartel  
Krista Belscamper  
Kathryn Bennett  
Jennifer Bieck  
Stephen Bjorg  
Melissa Booth  
Rod Botts  
Edward Brady  
Marie Bridges  
Amy Brooks  
Marilyn Brown  
Carly Bruskiewicz  
Michael Bryznsky  
Jonathan Burks  
Dan Burzynski  
Angela Bynum  
Abou Camara  
Yolanda Carmona  
Anna Colosimo  
Jessica Davis  
Linda Davis  
Leah Davis  
Jeremy Dunn  
Bridget Durkin  
Adam Eader  
Barbara Edwards  
Kevin Ellis  
Danielle Fields  
Jennifer Flack  
Janet Gerard  
Anna Gerschwiler  
Susie Gerschwiler

Chad Giese  
MJ Gilfillan  
Allison Gipp  
Dan Glomski  
Justin Hanson  
Marilyn Hegge  
Corleen Heidgerken  
Gerard Heidgerken  
Kim Henke  
Haley Hinze  
Heather Holaubey  
Barb Hricovsky  
Lahku Htoo  
Michael Hudson  
Mark Anthony Hunkel  
Caren Janz  
Leslie Johnson  
Chelsey Johnston  
Sofia Jonas  
Maura Jordan  
Nadine Jordan Burrell  
Travis Kalmuck  
William Kanivar  
Prang Kiattisarnpipop  
Katie Koffman  
Andy Koffman  
Andy Komisar  
Christine Kramer  
Yelena Krayzuan  
Jean Kreiser  
Peggy Krimmer  
Tom Kroeger  
Rorey Kroening  
Kellen Kroening  
Carol Kropidowski  
John Kuehn  
James Langhenry  
Alix Lanren  
Matthew Larson

Jill Lau  
Bridget Lee  
Stephanie Lehn  
Jeff Lesiecki  
Roman Lichon  
Laura Lieske  
Dan Lightfuss  
Al Lopata  
Jerry Lynn  
Tom Lynn  
Margaret Lynn  
Jean Maher  
Jessie Maier  
Melissa Malone  
Robin Martin  
Vanessa Matusin  
Patty McCauley  
Meghan McNatt  
Joan Meznarich  
Amy Mondry  
Adam and Micah Nelson  
Haley Nolan  
Evan Ott  
Christie Pape  
Steve Persons  
Kim Pike  
Jordan Poepping  
Christie Pope  
Elma Racadio  
Ricca Racadio  
Allison Radloff  
Robert Rakow  
Rachel Reed  
Lara Johann Reichart  
Jordan Reigel  
Jay Reinke  
Jennifer Reinke  
Ashley Reynolds  
Chris Reynolds

Susan Rolbiceki  
John Ruebartsch  
Arcmana Salvi  
Anne Samata  
Laura, Mark & Leah  
Savatski  
James Schmidt  
Kathryn Scholz  
Caroline Seiler  
Casey Shorts  
Betty Shorts  
Monica Scibba  
Paula Smasal  
Adam Smith  
Mathew Spencer  
Kristen Stevens  
Brian Thiel  
LuAnne Thompson  
Bryan Tomczak  
Cuong Truong  
Yimleej Vang  
Judy Villegas  
Doug Visvader  
Chris Vitale  
Scott Vogt  
Justin Vrakas  
Brian Walsh  
Barbara Weber  
Dan Weigand  
Danielle Westbrook  
Natasha Willhite  
Kimberly Williams  
Margaret Wojtulewicz  
Stacey Zelinski  
Elizabeth Zingle  
Drew Zoromski

Visit us on the web at [www.nh-milw.org](http://www.nh-milw.org)

Like us on **Facebook**



Follow us on **Twitter**

