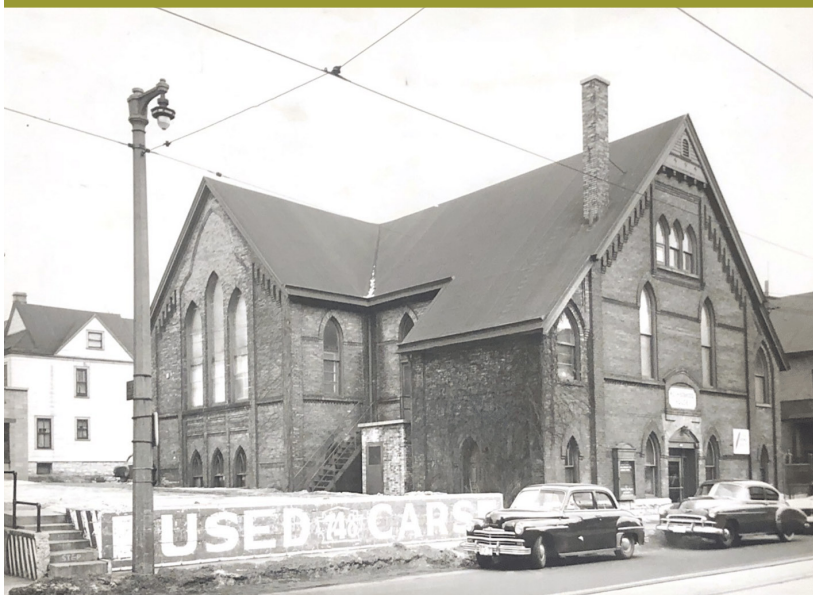




2021 ANNUAL REPORT

Neighborhood House

OF MILWAUKEE



Inspiring Discovery

The last year and the Next 75 years: Thoughts from the Executive Director

Dear Neighborhood House Friends;

Neighborhood House had served more than 4,100 area residents, up 60% from our COVID-closure year and at pre-COVID levels. As a key component of our recent work, we launched a vaccination effort that has offered more than 420 COVID vaccinations to area residents, both our own participants and neighbors.

With the help of many in the Neighborhood House community, we also did something audacious during the pandemic. We planned the opening of a new Neighborhood House food pantry; one to replace a decades-old nearby pantry that closed suddenly as COVID took hold. The new pantry served nearly 3,000 unduplicated guests in its first year.

On our other program and facilities fronts, we amped up our efforts. At the Nature Center, we have a new refortified heirloom Neighborhood House Sugar Shack and thanks to VJS Construction, more than 400 newly-planted trees and a series of lodge improvements. At our Garden Park, we added new playground equipment and garden beds, in anticipation of upgrades next year. At our International Learning Program, we secured grants to remake the parking area grounds and lighting, and to improve internal air filtration.



At our home on Richardson Place, we recreated our entire front yard and loop drive this fall, using nearly \$150,000 in grants and gifts to make our north side environmentally-friendlier, safer, and simply better-looking. Wait until you see our new 75th Anniversary Arch. Look for the hundreds of tiles made of our kids, staff team and Board members under the guidance of artist Sally Duback.

Inside our building, we made huge strides, as well. With the backing of the Pat Connaughton Foundation, we completed a \$55,000 upgrade of our gym, changed out the tired carpeting of the Family Lounge, with VJS Construction Services support, remade our security and air filtration systems, and replaced defunct kitchen fixtures to create a food storage facility that have supported nearly 10,000 food pantry visits.



While serving strong numbers and making improvements, we retained the quality of our work, in spite of challenges. Since our last in-person gala, we maintained our YoungStar 5 quality preschool status, sustained our Early Head Start program mandates with Next Door, kept the respect of our reviewers at United Way, and renewed our refugee certifications with the U.S. Commerce Department. We did not skimp on quality, even as we morphed our work and remained careful stewards of funds.

What does the future hold? Neighborhood House has been morphing for 75 years to meet the needs of a changing community. Neighborhood House will continue to adapt to hold true to its focus on inspiring discovery in



Milwaukeeans of all ages as well as continue to revise and revamp its programming to meet changing needs. We now have a strong Board community and staff team, led by Board member and Vice President Monica Genz, working on a fresh strategic plan set for completion in spring 2022. The future is bright.

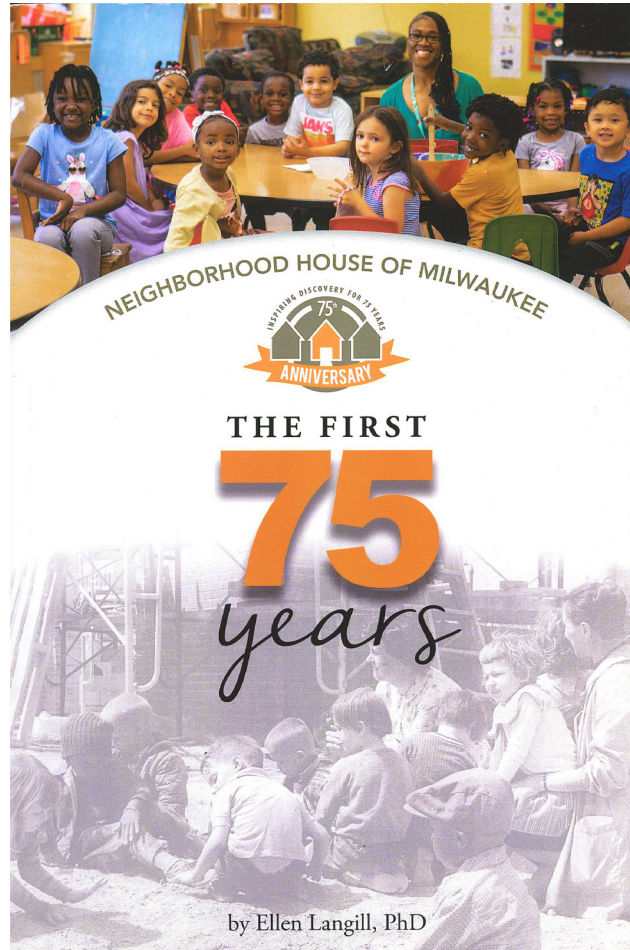
We recently published a first-ever Neighborhood House history book. As I plan my retirement after nearly eight years at Neighborhood House, that very book makes me confident in our continued success. Its pages show that we are built on the strong foundation created by hundreds of past staff and volunteers, and that base is resilient and solid. Neighborhood House is certain to continue to adapt to keep the strength of our traditions, while continuing to inspire discovery in our youth this year, and in the 75 years to come.

Best wishes for health and success,

Jeff Martinka

Executive Director 2014-2022

P.S Please let us know if you would like a copy of the book and we would be happy to send it to you for the cost of shipping.



Board Leadership thoughts on Celebrating 75 YEARS

Dear Neighbors and Friends,

We are proud to celebrate 75 years of Neighborhood House work in our community, work that includes infants and children developing a love of learning, teens exploring careers in order to find paths to success, refugees becoming self-sufficient so that they can support their families in calling Milwaukee home, and parents finding mentors and peers in this community.

For seventy-five years, Neighborhood House has been a safe place where people connect with the resources they need to thrive. Since 1945, our staff and volunteers have inspired discovery for Milwaukeeans of all ages and all backgrounds. This annual report offers photo glimpses of Neighborhood House past and present, memories made possible by supporters like you.

We owe our continued success to our community partners. We offer a special thank you to the many friends and organizational partners whose contributions are recognized within these pages.



President CJ Wauters and his wife Hope at the 75th Anniversary Neighborhood House Gala

Sincerely,

CJ Wauters
President, Board of Directors

Monica Genz
Vice President

Terry Young
Past President



President, C.J. Wauters,
Godfrey & Kahn, S.C.

Joe Armeli,
AVI-SLP

David Jorgensen,
VJS Construction Services

Brian Spaid,
Marquette University

Past President, Kathryn A. Kuhn,
Medical College of Wisconsin

Gregory Eul,
PricewaterhouseCoopers

Stephanie Ellis Radtke,
Community Volunteer

Maddy Tarbox,
VJS Construction Services

Vice President, Monica Genz,
BMO Harris Bank

Montique Evans,
Lutheran Social Services

Michael Ramstack,
Froedtert & The Medical College of WI

Bryan Terry,
South Milwaukee Public Schools

Secretary, Malinda Eskra,
Reinhart Boerner Van Deuren, LLP

Monique Jones,
WEC Energy Group

Jeff Rohrer,
Mayville Engineering Company

Terry R. Young,
Northwestern Mutual

Treasurer, Kevin Rich,
Marquette University

Judith Davidson Shane,
CAPS

INSPIRING GOOD STEWARDSHIP

We are proud to affirm that Neighborhood House maintained its strong financial health in FY 2021. Prior to and during the pandemic, we made significant new investments in our staff team and facilities. Still, we closed the year in a very strong cash position, supported by the support of our friends and continued fiscal prudence. We also sustained our Platinum Level recognition from the Guide Star, the nonprofits' rating agency, their highest level available and, new this year, a 4-Star rating from Charity Navigator. Our fiscal success is grounded in community partnerships and careful resource management.

With gratitude,



Kevin Rich
Board Treasurer

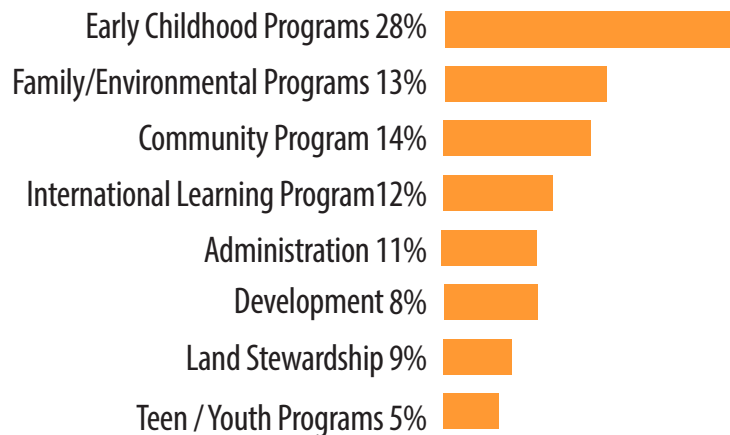
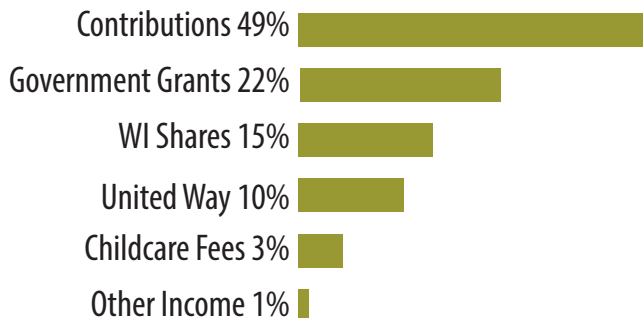


Jerri Washington
Finance Director



Neighborhood House Finance Director Jerri Washington
(left) with Treasurer Kevin Rich (Right)

FINANCIAL SNAPSHOT* 2020-2021



Total Revenue: \$3,397,200

Total Expenses: \$2,751,843

BALANCE SHEET

As of June 30, 2021

Total Assets	\$ 3,536,453
Total Liabilities	\$ 185,480
Total Net Assets	\$ 3,350,973
Total Liabilities & Net Assets	\$ 3,536,453
Change in Net Assets	\$ 645,357



*A full audit report is online at neighborhoodhousemke.org or available upon request.
Please contact Widge Liccione at 414.933.6161 ext. 127 for a copy.

Program Impacts

In the 2020-2021 year,

4,167

area residents served,
in spite of the COVID-19
pandemic. Safely
operating live/face to
face.

United Way

rated our Early
Childhood and Youth
Programs as
**"Exceeds
Expectations"**.

5,184

hours of service to NH,
up from 3,000 hours
last year.

Inspiring Discovery and Impacting Lives Since 1945

In 1945, Father Reinhart Gutmann and a team of dedicated volunteers established the Episcopal City Mission to "operate as a social center for neighborhood children, because there is a very real need on the west side of the city." That City Mission became Neighborhood House of Milwaukee in 1950, the same year Gutmann hired a promising young graduate, Ray Richardson, directly out of the University of Illinois. Ray came to gain experience, but stayed as a critical part of the NH family for nearly 40 years.

Since 1945, thanks to the early leadership of Father Gutmann and Ray Richardson, and guided by the talents of thousands of volunteers, Board members and staff in the eight decades since, Neighborhood House has constantly evolved to meet the needs of preschoolers, youth, refugees, and an increasingly diverse community. In the process of inspiring discovery in generations of Milwaukee families, Neighborhood House has empowered children, youth, families, and individuals, and inspired neighbors, community partners, and supporters.

EARLY CHILDHOOD PROGRAMS (ages 6 weeks-12 years)

The goal of the Early Childhood Program (ECP) is to develop and support high quality, community and family-focused early childhood education. In 2020/2021, the program served 85 infants and children between the ages of six weeks to twelve years old. Infants and children participate in multi-disciplinary activities that enhance early brain development and cognitive skills. The program continues to operate under the prestigious Early Head Start Partnership Program, under the coordination of our partners at Next Door. Our ECP program retains a top YoungStar 5 rating from the State of Wisconsin, placing it in the top 7% of preschool programs in the Milwaukee area, and last year, the United Way of Greater Milwaukee and Waukesha County rated our ECP program as "Exceeds Expectations", placing it in the top 10% of United Way's more than 220 area programs.



Food Pantry served
2,945
unduplicated individuals

**Third,
top level
YoungStar 5**
Star rating for our
Preschool Program from
the state of WI.

59
new U.S. citizens with
our expanded success
with Milwaukee
Refugees.



SCHOOL-AGED PROGRAMS (ages 5-12 years)

Our youth initiatives operated on our main site include University Kids' Club (UKC), a state-licensed, before and after-school program and our annual, 11-week Summer Day Camp. These programs provide educational enrichment, recreational opportunities and community engagement activities designed to improve academic achievement, promote healthy lifestyles, and strengthen life skills.

PRESCHOOL (ages 6 weeks-4 years)

Neighborhood House's YoungStar 5 rated Early Childhood Educational Program provides exceptional care working parents can rely upon. We also offer Early Head Start programming for low-income children. We help build literacy and math skills and support school readiness. Core to our values is partnering with our parents to assure we support their goals and hopes for their children.



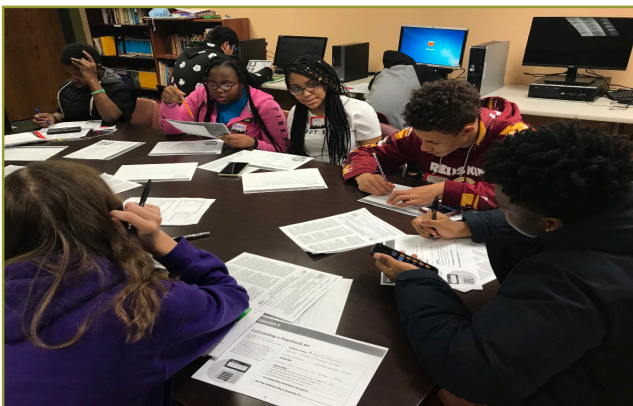
SAFE PLACE AT STORY SCHOOL (ages 6-12)

Our Story School program served 51 children and youth last year. Conducted in partnership with Milwaukee Public Schools, this after-school program, located in the Miller Valley neighborhood, serves students in grades K5-8. Safe Place provides academic support, educational enrichment and recreation during the school year and through a six-week summer program.

INTERNATIONAL LEARNING PROGRAM (ILP) *(serving all ages)*

Our ILP prepares newly-arrived refugees, mainly from Southeast Asia and East Africa, for self-sufficiency and success by conducting English as a Second Language (ESL) classes, citizenship classes and financial literacy classes and helping participants prepare for and seek employment. ILP served 350 refugees in 2020/2021, retaining our role as the largest educator of refugees in Wisconsin. We're proud that 43 of our adult refugee learners and 16 of their minor children earned U.S. Citizenship last year with our help. In addition, the ILP continued to expand its contract work to provide job training skills to our refugee students during the year.

In addition, we sustained our partnership with the Southeast Asian Literacy Program (SEAL). The link assist 40-60 Burmese youth with homework help, English classes, and mentoring.



TEEN PROGRAMS *(ages 13-19 years)*

Our Teen After School and Summer Camp Programs served 150 youth, down from prior year levels, due in particular to our COVID-19 shut-down and phased ramp-up. Age-appropriate activities are organized around a group structure and are designed to develop a strong sense of self, as well as provide a balance of social and academic skill preparation.

Our Teen Program promotes positive behaviors for youth 13-19 years of age. Teens participate in homework help, organized sports, teen leadership and enrichment activities and youth employment and career development workshops. The teen programs offered a full-day, 11-week summer camp program. Last year, the United Way of Greater Milwaukee and Waukesha County rated our Neighborhood House teen program as "Exceeds Expectations", placing it in the top 10% of United Way's more than 220 area programs.

COMMUNITY EDUCATION

(serving all ages)

Neighborhood House provides a variety of community programs in the health, environmental and family service areas, with 753 program participants in the COVID-19-impacted 2020/2021 fiscal year. Here is a summary of those work areas:

Environmental Education Program (EE): One of the oldest environmental education programs in Milwaukee, EE, teaches science-based education and engages children and families in environmental stewardship, using a NH-developed curriculum. We provide environmental and urban agriculture programming to our all youth and families at our Milwaukee facilities as well as our 90-acre Nature Center. Our goal is to instill a sustainable appreciation for urban and rural natural resources. This is critical as many of our youth and families have limited interaction with nature due to restricted access to safe, public green spaces as well as urban dangers. EE is also interwoven throughout all of NH's other programming areas.



Community Health Initiatives: We believe a strong community consists of healthy individuals and families and we produce free public events to bolster our neighbors. They include our annual health resource fair; fall flu immunization events; workshops and health screenings; and health-focused events. We also provide a variety of health initiatives to targeted schools and populations: they include Woman 2 Woman Program, childhood immunization resources, healthy lifestyle education and mental health referrals to resources.

Family Adventures: This program offers free or very low cost events and trips to the public. Among our most popular field trips are maple sugaring and camping at our 90-acre Dodge County Nature Center as well as trips to unique museums and cultural events.

Personal Responsibility Education Program (PREP): Operating under the motto: "Decide! Commit! Succeed", PREP served youth between the ages of 10-19 in five area schools. Conducted in partnership with the Wisconsin Division of Public Health, we focused youth on financial literacy and fitness, making responsible choices, and healthy relationships as tools to prevent teen pregnancy and substance abuse.

FOOD PANTRY

(serves households throughout the two near westside zip codes)



At the close FY20, Neighborhood House was poised to open a brand new initiative, a food pantry, designed to replace one that had served the neighborhood for decades until its sudden closure in early 2020. The pantry opened in July 2020 and operates on Wednesday and Thursdays, using repurposed Neighborhood House kitchen and storage space. In its first nine months, the pantry and its community volunteers served nearly 3,000 residents from 915 households (unduplicated numbers).



LAND STEWARDSHIP PROGRAM

(serves families and youth throughout the region)

In 2021, there were 8 Land Stewardship Interns participating in the NH Conservation Crew. The NH Conservation Crew interns concluded their summer seasons, working on prairie restoration, tree planting, invasive species removal, trail and stream crossing maintenance, and NH Garden Park work. Our innovative Conservation Corps Program offers paid internships, job readiness training and natural resources career explorations to qualified, urban, high school and college students.

The summer season was supported by more than 700 hours of volunteer work, which included returning teams, which is gratifying. In facilities work, we coordinated the creation of a large new swing set and new pollinator garden at the NH Garden Park.

In terms of funding and partnerships, partnerships were also forged with the US Fish & Wildlife

Service, WI Department of Natural Resources, MMSD, US Environmental Protection Agency, Fund for Lake Michigan, Oconomowoc High School, and the UW-Milwaukee Conservation and Environmental Sciences Department, which has adopted



Thank you to our Donors

FISCAL YEAR 2020

July 1 2019 - June 30 2020

Legacies \$50,000+

Bader Philanthropies
The Burke Foundation
United Way of Greater Milwaukee and Waukesha
With Us Foundation

Visionaries \$25,000 - \$49,999

Melitta S. Pick Charitable Trust
Our Saviors Lutheran Church



Dream Builders \$10,000 - \$24,999

Camille A. Lonstorf Trust
Crysdahl Foundation
Evan and Marion Helfaer Foundation
Forest County Potawatomi Community Foundation
Fund for Lake Michigan
Peter & Sue Hitler
Jane Bradley Pettit Foundation
Krause Family Foundation
Lux Foundation, Inc.
Robert Smith & Sarah McEneaney
Mihi Cura Futuri
Mount Olive Lutheran Church
Mt. Olive Lutheran Church
Nicholas Family Foundation
PLAN Foundation
Pyramax Bank
Stephanie and Jay Radtke
Richard and Ethel Herzfeld Foundation
ROS Foundation
Trostel Family Fund
United Way Community Donor Choice Campaign
United Way of Grtr Milwaukee/Waukesha
VJS Construction Services
Wakerly Family Foundation
Drs. Jeffrey & Donna Whittle
Women's Fund of Greater Milwaukee

Champion \$5,000 - \$9,999

Anonymous
A. O. Smith Foundation
Bock, John C. Foundation

Brookby Foundation
Camille A. Lonstorf Trust
Dollar General Foundation
Tom and Meghan Findley
Godfrey & Kahn, S.C.
Harley-Davidson Foundation, Inc.
Jane Bradley Pettit Foundation
David and Madeleine Lubar
Robert Smith and Sarah McEneaney
Milwaukee Admirals Power Play Fdn.
Stephanie and Jay Radtke
Ralph Evinrude Foundation
Reinhart Boerner Van Deuren, S.C.
Don and Judy Shane
Bruce Smith
Sweet Water: SE Wisconsin Watershed Trust
Symchych
Women's Fund of Greater Milwaukee

Trailblazers \$1,000 - \$4,999

Advantage Leasing Corporation
Aegis Corporation
Anne Luber Foundation
Joe and Christa Armeli
Ayco Charitable Foundation
Alfred & Isabel Bader
Baker Tilly Virchow Krause, LLP
Bank Five Nine
BMO Harris Bank
Thor Christensen
Clare M. Peters Charitable Trust
Clif Bar Family Foundation
Kathy Kuhn and John Dirkse
Dorothy W. Inbusch Foundation, Inc.
David Drew
Dudley and Constance P. Godfrey Fdn.
Tom Ellis
Episcopa Diocese of Milwaukee
Dave & Malinda Eskra
Barbara Findley
Findley, Mary Lou 1978 Rev. Trust
Monica and Scott Genz
Mike and Lynn Giffhorn
Golf Event Revenues
Charles and Jean Gorham
Great Midwest Bank
Greater Milwaukee Association of REALTORS
Green Bay Packers Foundation
Historic Concordia Neighbors Inc.
Infinity Benefit Solutions
Inpro Corporation
Ixonia Bank
D.J. Jackson
Johnson Controls
Gary and Judy Jorgensen
Just Mechanical

Rev. James Kaestner
Mark and Amy Katz
Ted and Mary Kellner
Donald and Susan Kerber
Mr. Dan Krueger
Martha Brown and Tony Lam
Valerie Langston
Thomas & Micaela Levine
Widge Liccione
LISC Milwaukee
David and Madeleine Lubar
Mitchell Manthey
Marsh & McLennan Agency
Jeff Martinka
Mr. Ryan Melby
Messmer Foundation
Rebekah Nicholas
Peggu & John Niemer
North Shore Bank
Northwestern Mutual / Special Events
Posner Foundation, Inc., Gene & Ruth
Puelicher Foundation, Inc.
Quarles & Brady LLP
Quorum Architects
Donna Recht
Reinhart Boerner Van Deuren, S.C.
Kevin & Gina Rich
Edward A. Richardson
Robert W. Baird & Co.
Jeffrey Rohrer
Senn Family Fund
Roger & Judy Smith



Tavaris Smith
Somerstone
Brian and Jennifer Spaid
Stifel Investment Banking
Dr. Stan Stojkovic
The Probst-Mauer Charitable Fund
Twin Cities Public Television Inc
Lee & Margaret Tyne
Hope Liu and C.J. Wauters
We Energies Foundation
WIPFLi
WISN-12
Melody and Richard Wolske
Lindy & John Yeager & Florsheim
Terry & Oksana R. Young

Thank you to our Donors

A special Thank You to VJS Construction Services, Inc. for so generously printing our 2021 Annual Report.

Public Sector Supporters 2020 - 2021

- US Department of Agriculture
- WI Department of Public Instruction: Child & Adult Care Food Program
- ResCare Workforce Services: Administrative Matching Grants for Supplemental Nutrition Assistance Program/SNAP Cluster
- US Department of Housing and Urban Development City of Milwaukee: Community Development Block Grants (CDBG)/ Entitlement Grants Cluster
- US Environmental Protection Agency US Environmental Protection Agency: Environmental Education Grant Program
- US Department of Education Wisconsin Technical College System: Adult Education/Basic Grant to States
- US Department of Health & Human Services
- WI Department of Health Services/MCW: Affordable Care Act Personal Responsibility Education Program (PREP)
- WI Department of Children & Families Refugee and Entrant Assistance/ State Administered Programs Refugee and Entrant Assistance/Discretionary Grants Refugee and Entrant Assistance/Targeted Assistance
- Community Advocates: Block Grants for Prevention and Treatment of Substance Abuse
- Next Door Foundation: Head Start
- End Domestic Abuse WI: Family Violence Prevention/Domestic Violence Shelter and Support Services
- The Wisconsin Coalition Against Domestic Violence, Inc.
- WI Department of Health Services
- WI Technical College System WI Department of Public Instruction
- WI Department of Workforce Development
- City of Milwaukee Substance Abuse and Mental Abuse Services Milwaukee Public Schools



Pacesetters \$250 - \$999

6212 LLC

Robert & Mary Ellen Acker

All Saints' Cathedral

Eddie-Sahagian Allsopp

Amazonsmile Foundation

Christopher and Kathleen Anderson

Ansary & Associates LLC

B & K Powder Coating Corp.

Eric and Kathryn Bach

Mark and Heather Baden

Margi and Mike Bartaczewicz

Donald & Donna Baumgartner

Priscilla and Anthony Beadell

David & Suzy Boerke

Clete Bordeaux

Helen Brady

Mary & Robert Breger

Joel & Audra Brennan

Bright Funds Foundation

Cheri Briscoe

Kenneth Bryden

Mr. & Mrs. Christopher and Natalie

Cahlamer

Cassia Carter

Steve Hargarten & Janis Cohn

Dan and Paige Conley

Dennis and Amy Connolly

William and Carla Cummings

Stewart Edwards & Joanne Danforth

Francis and Mildred David

Gina De Rosso

Randolph H. Dean

Jean W DiMotto

George and Sandra Dionisopoulos

Howard and Eileen Dubner

Thomas & Sandra Dunst

Zach Dykema

Linda Ellis

Greg and Michelle Eul

Michael & Doreen Festge

James & Judy Ford

Barbara Fuldner

Aaron Gardner

Tina Garthus

Dr. & Mrs. Robert and Gleeson

Mr. John Green

Ms. Kelly Groppe

Brian Guerin

Azita Hamedani

Paul & Philia Hayes

Samuel Herzberg

Ronald & Mary Heuver

Mr. Tim Hiedt

Andrew Holman

John and Susan Honkamp

Irving and Lorraine Armour Memorial Fund

Donald Jackson

Thomas & Pauline Jeffers

Joan and Fred Brengel Family Foundation

Mr. Robert Johnson IV

Craig & Lisa Jorgensen

Mr. Jack Kampf

G. Frederick & Sue Kasten

Rea Katz

Fred & Joan Kessler

Patrick and Tricia Knight

Steven and Debra Koenig

Matthew Kovacich

Rosemary Kropp

Arthur and Nancy Laskin

Joseph Lehmann

Mara Lord

Thank you to our Donors

FISCAL YEAR 2021

July 1 2020- June 30 2021

Diana Luttmann
Elizabeth Lynch
Brian Manthey
Mary Maronek
Lisa A Mauer
Susan and John McNally
Ken Meurer
Carl Meyer
Mr. Glen Milkus
David and Lisa Misky
Scott & Marjorie Moon
David and Kathleen Morris
Henry & Mary Ellen Vincent Musto & Shea
David and Karen Nelson
Mr. Matt Nitka
Michael Nord
Christopher and Anne Noyes
NYPD 231 LLC
David Baumann & Kathleen Olejnik
Jeff Owens
Mr. Scott Paar
Tom and Dona Palmer
Ronald and Elizabeth Pfluger-Plfuger
Bruce & Mary Pindyck
Plumbers Union, Local 75
Walter Pokrzywa
Thomas and Sheri Price
PricewaterhouseCoopers LLP
Ronald and Susan Printz
Jeanne Prochnow
Elizabeth Raisig
Mary Reilly
Heidi Retzlaff
Christine Reynolds
RitzHolman CPAs
Ed & Beth Sahagian-Allsopp
Brigitte Salver
Fay Sanders
Dave and Judy Scharfenberger
Madeline Schlederer
Heather and Dan Schuh
Brian & Barbara Scotty
William Shaw
William Shaw
Ms. Jennifer Smith
St. Paul's Lutheran Church
Michael and Carolina Stark
Leann Stiefel
Daniel and Joan Stoffel
Mr. Matt Sylla
Jeff and Maddy Tarbox
Mr. Todd Trzcinski
United Way - Sheboygan Area
United Way of Greater Greensboro
United Way of Metropolitan Chicago
Usinger Foundation
David Scharfenberger Wachtel Tree
Science & Service Inc.
Geoffrey Wallace
Don and Mary Pat Wallance and Rose

Curtis and Patricia L. Washington and Dunn
Mr. Dirk Werderich
Whole Foods Market - Milwaukee
John and Celia Wiberg
Mike & Nancy Yttre

Friends of the House \$100 - \$249

George Akpan
Edward Alarupi
J. Stephen & Barbara Anderson
Susan Apple
Jessica Banaszak
Johnson Bank
Gayle Bauer
Todd Beadke
Linda & John Beazley
Jeff Bentoff
Nathan Berken
Liana Berlyn
Bradley & Lisa Blaeser
Bob & Wendy Bosworth
Roderic Botts
Michael & Donna Brady
Susan Brennan
Thomas & Suzanne Brophy
Juanita Bryden
Kevin Carr & Judith Greco-Carr
Laurie Carson
Stephen Check
J. Thomas & Judith Christofferson



Mike Connor
Eric Crawford
Raymond and Patricia Crist
Roselette Dancers
Michael and Stephanie Delmore
Ned and Anne Devitt
Diane Dietrich
Kelli Dixon
Amy Donahue
Gary Drescher
Ellen Drought
Christine Duback
Sally Duback
Janet Duncan
Bob Dusek
Mike and Kathy Dwyer
Steven and Sandra Dykstra
Mary Ellen Welsh

Susan Emmer
Shelly Erdmann
Sara Falci
Meryl Federer
Teresa Feeser
Eric Felie
Daniel and Patricia Fetterley
Five O'Clock Steakhouse
David and Janet Fleck
Forward Communications
Jason Fowler
Robert Frisch
Thomas Gale
Daniel Gaus
Rene Godwin
Patricia Goldstein
Sally Gonzalez
Meggie Graham
Paul and Renee Griepentrog
A Groppe
Eva Groppe
Mr. & Mrs. Micheal and Mary Hahn
Eileen Hanley and Dennis Phifer
Dale and Cathy Harmeyer
R. Jeffery and Cynthia Harris
Micheal and Lisa Hatch
Andrea Hayen
Kathryn Hein
Tom and Susan Hickey
Jeff Hilger
Fred Hoepfl
John and Kathy Housiaux
Ironworkers Local 8
Sona Jepson
Monique Jones
Colin Jorgenson
Ralph and Gretchen Kane
Maureen Kania
Patrick and Jane Keily
Matthew Kessler
Andrew and Joan Klimpel
Katherine Kloppenburg
Monica Koca
Brett Koeller
John and Betty Ann Kolesari
Warren Kreunen
Kathy Kugler
Bob Kujawski
Sally Kuzma and Aaron Godfrey
Jack Lappin
Brad J. LaRue
Patrick Laske
Nancy Latton
Ellen Laubusch
Jack Lawder
Roth Leah
Eldon F. Lee
David and Elizabeth Lee
Ed and Lizette Lewis
Dianne Lyons

Thank you to our Donors

MacGillis Wiemer LLC.
Barbara B. Markoff
Josheph and Dorian Martinka
Martinsek and Associates
Mary McCormick and Timothy Hawks
Mary McEllistrem
Matthew McKenna
Norm and Nancy McLure
Scott McMillan
Daniel Metzendorf



John and Linda Meurer
Felicia Miller
Logan Miller
Carolyn Miller
George Munkwitz
Ken and Winifred Neisser
Jenny and Jeremy Nichols
Jean Novy
Rachel Oasan
Hayley Pfaff
James Phillips
Pompeii Women's Club
Daniel Popp
Truc Price
Karen Radtke
Stephen and Susan Ragatz
Toby Recht
Tara Reimer

John and Kelly Seaman
Elizabeth V. Sellars
Fran Serlin
Dr. Donald and Sandra Shaw
Patrick W. Smalls
Jacquelyn Smith
Mary Smith
Sara Stotzer
Studio Gear
John Surber
Micheal Tarnoff
Anne and Robert Trunzo
Jeff Van Ess
Dan and Maureen Vanden Heuvel
Nicholas and Marcella Wahl
Anne Wal
Robert and Jill Wickham
Meghan Willman

Supporters \$1 - \$99

Brian Ahhalt
Ms. Ava Allen
Joel Alter
Ms. Michelle Arundale
Thor Backus
David Barouski
Marge Beil
Cornelia Beilke
Mr. Joe Bertsch
Mr. Richard Bittner
Julie Ann Bittner
Corey Boldt
Mr. Kevin Brady
Kent Lowry & Catherine Breitenbucher
Ms. Breanna Brown
John Williams & Theresa Brown-Williams
Ms. Isabel Buckley
Mr. Maverick Bushman
Rachel Casillas

Jean Ericson
Ms. Alexis Falci
Megan Fenger
First Weber Realtors
FIS
Zeno Franco
Tony Franda
Morgan Frank
Jessica Franklin
Robert Fraser
David & Tifany Frazer
Robert H and Judith A. Free
Ms. Nina Galang
Mark Goldstein
Mr. Nathan Groppe
William Heinzelman
Lawrence and Barbara Herbst
Ms. Beth Hirschmann
Ms. Linda Hoffman
Michael Howden
Ms. Monica Hubrich
Kathleen Huevler



Ms. Jill Jankowski
Tara Jones
Nickolai Kalenak
Jennifer Karpen
Nicole Kauss
William & Kathleen Kean
Amanda Keeler
Peggy Kendrigan

Gifts of Time and Talent

Last fiscal year, 325 volunteers donated their time and talent in 2020/2021. They offered 5,184 hours to Neighborhood Hood House! Conservatively, this represents \$140,000 of donated services provided. This includes financial literacy experts, Board of Directors and Committee support, and facility and special project helpers at our main site, the International Learning Program and Nature Center.

Katie Reinhart
Virginia Riesing
Richard and Amanda Rose
Thomas and Judith Saeger
Debra and Jeremy Scarlett
Karen Schaefer
Thomas C. Schmitz
Marilyn Schrader
Debri Schwid
Christina Scoptur

Ms. Judith A Cassidy
Zach Chartrand
Ms. Anne Marie Ciccone
Costco UW Campaign
NyAnn Cox
Matthew DeLange
Tyrone P. Dumas
Rodney & Helen Eglash
Thomas and Patricia Ehrmann
Vanessa Eisenmann

Stephen and Tamara Kennedy
Mr. Jeffrey Kiggins
Ms. Kathy Kiggins
Sydney Kirsh
Nathan & Nancy Kittleson
Ms. Kim Klett-Atcheson
Wendy Kramer

Thank you to our Donors

FISCAL YEAR 2020

July 1 2020 - June 30 2021



Mr. Kurt Kratze
Ms. Angi Krueger
Scott and Barbara Lamers and Gurican
Christine Leung
Louise Leuthner
Peter Lee & Karen Levy
Sarah and Gary Lieungh
Renee Logee
Mr. & Mrs. Bill and Helen Lyons
Peggy M LeBrun
Mr. Michael Machi
Timothy and Martha Malloy
Ms. Sue Martenson
Stephen Marx
Brendan and Romy McCarthy
Daniel McCarthy
Margaret McCarthy
Cole McCraw
Gloria and William McCutcheon
Mr. Joe Megan
Kristal Melbye
Mr. Mark Merz
Mr. Mark Metzendorf
Siena Morrissey
Charles Mowrer
Bruce Murphy
Ashish Nayee
Loan Nguyen
Erik Noll
Kathleen O'Brien
Ms. Jaime Olson
Bonnie O'Neill
Gerald & Marjorie Pagel
Gerald & Donna Parshalle
Mr. Brian Poulson
Mr. Dan Peterson
Mr. Michael Piette
Ms. Gabrielle Piette
Mr. Doug Porter
Leslie Posey
Linda Pullen-Algee
Bonnie Radar
Rachel Ramirez
Mandy Ramlow

Ms. Nicci Rampson
Mr. John Roche
John and Suzanne Rodahl
Matt Rusch
Ms. Carrie Rymer
Lisa Sawyer
Joseph and Kathryn Schlidt
Emily Schultz
Robert & Constance Schwaab
Natraj Shanker
Austin Shriner
Kathleen and Carl Sincere
Barry Slavis
Ms. Erin Slifer
Ms. Cameron Sloway
Terry Stegan
Bruce Steinmetz
Allan & Judith Strauss
Nancy Suderland
Saralee Taibleson
Mr. Christopher Tanner
Mr. Lance Tappa
Amy Topel
Ms. Christina Travia
Lisa Trost
United Way of Greater Rochester
US Forest Service
Ms. Christina Vega
Valerie Vidal
Mr. Mark Viselli
Ruth and Jon Wallace
Mr. Kevin Walther
Peggy and Don Waterman
Jill Weber
Hester and Jack Werner
Mr. & Mrs. John West
Mark C. Witt
Scott & Sally Witte
Mr. Emmett Wood
David and Catherine Zabler

In-Kind Donors

Black Shoe Hospitality
Bonefish Grill
Eric Boutelle
Cave of the Mounds
Club Lac La Belle
Communications Workers of America
Local 4603
Cream City Cakes
Curby's Compost Service
Danceworks, Inc.
Nancy Day
Kathy Kuhn and John Dirkse
Disrupt Idea Company
Ms. Phyllis Dorf

Sally Duback
Dave & Malinda Eskra
Greg and Michelle Eul
Five O'clock Steakhouse
Christel Wendelberger
Renata Hansbrough-Brownlee
Harley-Davidson Motor Company
Carol Hicks
Irish Festivals, Inc.
Jewish Community Pantry
Kehr's Candies
Kinetic Mke
Phil Kirst
Koss Sterophones
Lake Geneva Cruise Line
Lakefront Brewery, Inc.
Helen Liccione
Widge Liccione
Elizabeth Lynch
Marcus Center for the Performing Arts
Jeff Martinka
Robert Smith & Sarah McEneany
Milwaukee Academy of Chinese
Language
Milwaukee Bucks Foundation
Emily Morrison
North Shore Congregational Church
Office of the Archbishop



Orange Spool Inc.
Palermo Villa Inc.
Pathways High School
Therese Pickart
Plum Media
Stephanie and Jay Radtke
Schlitz Audubon Nature Center
Alderman Russell W. Stamper
VJS Construction Services
Hope Liu and C.J. Wauters
Marilynn Weiland
Wisconsin Bike Federation
With Us Foundation

Every effort is made to ensure the accuracy of our donor list for fiscal year 2020/2021. If your name is omitted, misspelled, or incorrectly listed, we apologize. **Please contact Widge Liccione, Development Director, at (414) 933.6161 ext. 127 or widge@nh-milw.org.**

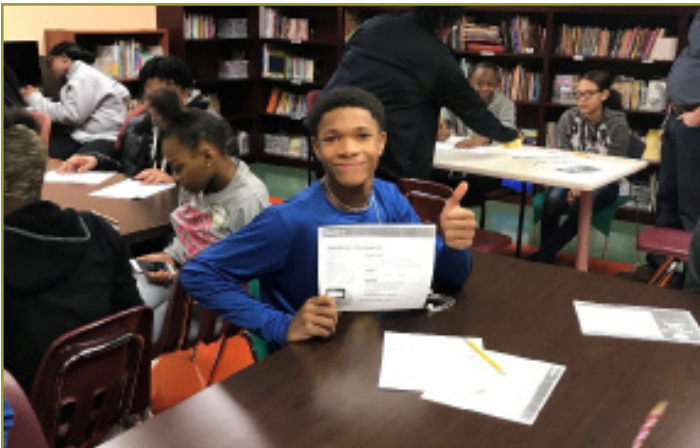


OUR MISSION

To inspire discovery in children and families of all backgrounds in our community

To be the educational, civic cornerstone that strengthens families and builds connections across communities.

OUR VISION



**Neighborhood House
Main Facility**
2819 W. Richardson Place
Milwaukee, WI 53208

**International
Learning Program**
639 N. 25th St.
Milwaukee, WI 53233

**Safe Place at
Albert Story School**
3815 W. Kilbourn Ave.
Milwaukee, WI 53208

**Neighborhood House
Nature Center**
Dodge County, WI

www.neighborhoodhousemke.org